



**heinlein**  
PLASTIK-TECHNIK



**TECHNICAL  
SERVICE  
& AFTER SALES**

AT HEINLEIN PLASTIK-TECHNIK



**OUR  
SERVICES**  
FOR YOUR  
SOLUTIONS



Heinlein closures and dosing systems are used in a wide variety of solutions in the pharmaceutical, medical, lifestyle products, food and nutritional supplement industries.

Our technical know-how, experience gained from the worldwide use of our products and product components and our responsive Support department provide the best possible conditions for the development of successful packaging solutions for our customers.







**THE PERFECT  
PACKAGING**  
FOR YOUR  
PRODUCT



03

Take advantage of our professional consulting services to help you choose the best primary packaging for your product. We select articles from our product range and dosage forms that best complement your product on the basis of your specifications. To do so, we conduct tests directly using your products and the dosage instructions provided. We then determine the best possible solution for you based on the results.

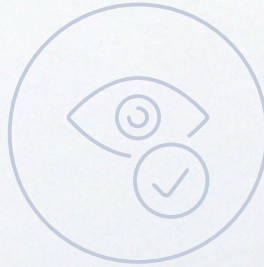
**The benefits: you accelerate your time-to-market and the logged processes we offer ensure traceability and transparency.**

**CLICK HERE  
FOR OUR  
ONLINE  
PRODUCT FINDER**





**EXTENSIVE TESTING**  
FOR YOUR PEACE OF MIND



HEINLEIN® provides the following:

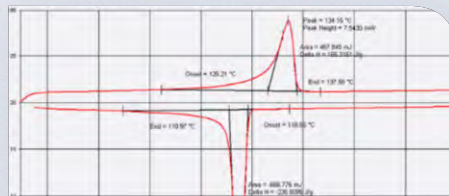
We also prepare all the necessary documentation for you, such as test certificates, material specifications and drawings.



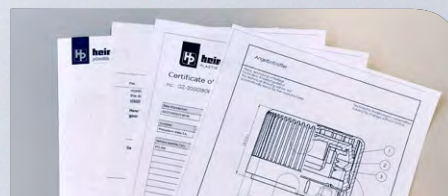
**Drip tests**



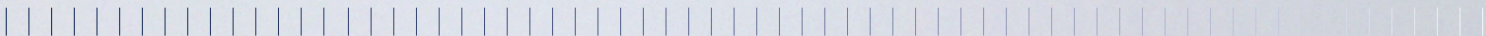
**Leak tests**



**Internal and external material analyses**



**Documentation (test certificates, technical drawings, torque analyses)**





**SUPPORT**  
FOR  
SCREW-ON  
HEADS



05

Our in-house production processes fully reflect our expertise in mould design and mechanical engineering. **The benefits:** as our customer, you benefit from our long-standing experience in processing, conveying and closure technology. We have particular expertise in screw-on heads in the area of closure technology.



Screw-on heads





## HELPING YOU SWITCH TO HEINLEIN PRODUCTS IN YOUR FACILITY

When you work with Heinlein, you get more than just closures; you get all of our know-how, service and support in your facility.

We provide support ranging from parameter configuration to conducting and evaluating trial runs and assist you with the seamless integration of our products. All other services are transparently billed to our customers on an hourly basis for technicians plus travel costs.





WE'D BE  
GLAD  
TO BE OF  
ASSISTANCE!

We are dedicated to providing comprehensive and expert services and communicating directly with our customers. A contact person with a technical background is always available for you. Working together with them, you are sure to find the right packaging for your product or a solution to your technical problem.

#### Helping you find the right solution

- + Dedicated contact person
- + Quick response times
- + Short lead times and delivery times thanks to reliable supply chains
- + High-quality products & free initial sampling
- + Reliable supply thanks to high stock levels

SIMPLY  
CALL US AT:  
**+49 981 9502 0**

or send us an email at:  
[sales@heinlein-plastik.de](mailto:sales@heinlein-plastik.de)

## ORDERING SAMPLES



### Do you require samples of our closures?

Just drop us a line – we send free samples anywhere in Europe within 48 hours.

To save paper, we do not include packing slips. Instead, simply scan the QR code on the box to find all important information about the products.

**For information and enquiries, contact:**  
[sales@heinlein-plastik.de](mailto:sales@heinlein-plastik.de)







WHAT OUR  
CUSTOMERS  
SAY



**During the last customer satisfaction survey, we received the following feedback:**

- + Our customers rated our support during their switch to Heinlein products as very good
- + Our customers rated our promptness in responding to enquiries as very good.
- + Our customers rated the quality of our products as very good
- + Our customers rated our Sales & Service department as being highly solution-oriented and fast.

**Our customers said they would recommend Heinlein Plastik-Technik to others.**



**YOUR HEINLEIN  
FULL-SERVICE  
PACKAGE**  
AT A GLANCE

10

Support at your facility

Dedicated  
contact person

Free initial sampling

Optical/sensor-based  
monitoring systems

Leak tests

Corresponding  
documentation  
(test certificates etc.)

Dosing tests

Compatibility tests  
with your bottles

Closure recommendations

Short delivery times

Reliable  
supply chain

Ready-to-process  
products





**GET IN TOUCH!**  
OUR MEDIA DATA



[www.heinlein-plastik.de](http://www.heinlein-plastik.de)



[www.heinlein-virtualspace.com](http://www.heinlein-virtualspace.com)

OUR NEW SHOWROOM



<https://catalogue.heinlein-plastik.de>

HEINLEIN® CATALOGUES & INFO PDFs



Heinlein® auf YouTube



Heinlein® auf



Heinlein® auf

We are part of the following network:

