

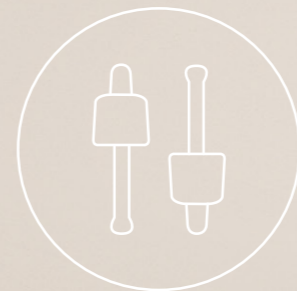


LIFESTYLE COLLECTION

CLOSURES AND DOSING SYSTEMS



WE PROTECT YOUR VALUES
NEW GENERATION OF PACKAGING



SAFE AND STYLISH

CLOSURES AND DOSING SYSTEMS

04

- STYLISH
- FUNCTIONAL
- TECHNICAL

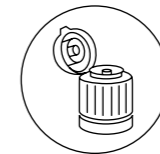


05

FLIPDROPPER®

FIRST-OPENING INDICATOR AND INTEGRATED DROPPER

06



The Flipdropper® is fitted with dual first-opening indicators on the bottle neck and on the flip cap. Key feature: the first-opening indicator drops into and is retained in a special pocket on the closure the first time the bottle is opened.

In 2021, the Flipdropper was awarded the Worldstar Award and the Pharmapack Award for its user-friendly and compact combination of functionality and design.

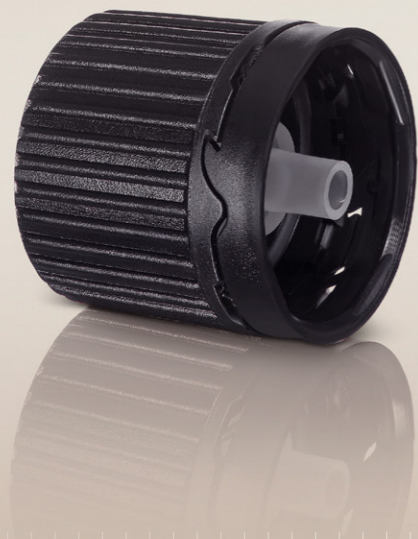
THE 4 HEINLEIN PLUSES

07

- + No tiresome and tedious screwing and unscrewing
- + Perfect dosing of liquids with various viscosities
- + Tamper-evident closure for optimum product protection
- + Can be processed on all conventional sealing machines

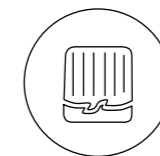
EXTREMELY RELIABLE PRODUCTS

ONE-PIECE TAMPER-EVIDENT CLOSURES WITH FIRST-OPENING INDICATOR



08

ONE-PIECE TAMPER-EVIDENT CLOSURES WITH FIRST-OPENING INDICATOR ●



Easy to open, easily verifiable protection when opened for the first time. Companies that value stringent product safety use tamper-evident closures with first-opening indicator. The ring is completely separated for unmistakable identification. The locking ring of the closure then remains clearly visible on the shoulder of the bottle.

We manufacture one-piece tamper-evident closures in a single operation using injection moulding. The surface of the closure contour is finely ribbed. The caps can be fitted manually or using semi-automatic or fully automatic filling and capping systems.

THE 4 HEINLEIN PLUSES

- + Patented
- + Extremely reliable products
- + Customer-specific colours
- + Can be processed on all conventional filling lines

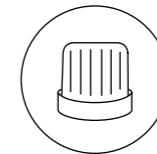
09

PERFECTLY PRACTICAL

TWO-PIECE TAMPER-EVIDENT CLOSURES WITH
FIRST-OPENING INDICATOR AND UNIVERSAL DROPPER



TWO-PIECE TAMPER-EVIDENT CLOSURES WITH
FIRST-OPENING INDICATOR AND UNIVERSAL DROPPER



Our two-piece closure with a separately moulded and fitted tamper-evident ring is especially user-friendly and sturdy. The discreet first-opening indicator provides the required tamper protection. It breaks off perfectly when the bottle is first opened and remains visible on the bottle shoulder during use.

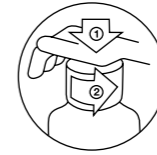
The packaging feels pleasant in the hand and is easy to open, which is particularly appreciated by older users. The closure is made of robust PP. The tamper-evident ring mounted inside the cap is made of HDPE. This makes the packaging highly resistant to tampering and fulfils industry safety requirements.

THE 4 HEINLEIN PLUSES

- + Extremely user-friendly and resistant to tampering
- + Very sturdy material
- + Ring breaks away perfectly and remains on the bottle
- + Custom designs on request

CHILD-RESISTANT CLOSURES

FIRST-OPENING INDICATOR COMBINED WITH VARIOUS DOSING METHODS



Child protection always takes the highest priority. Therefore, all of our child-resistant closures are optimised in terms of function, handling and, above all, with regard to the legally required safety and reliability standards. Product qualification in accordance with ISO 8317 and US 16 CFR part 1700.20 is extremely important to us. Child-resistant closures can be combined with droppers, pourers, syringe adapters or even pipette sets.

The closures come optionally in smooth, finely ribbed or deeply ribbed surfaces. They are available in black, white and other colours on request.

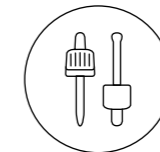
THE 4 HEINLEIN PLUSES

- + Very sturdy material and low closing torque
- + Can be processed on all conventional sealing lines
- + Easy to use for consumers
- + Perfect separation of ring when first opened, particularly resistant to tampering

PIPETTE SETS

CHILD-RESISTANT OR
TAMPER-EVIDENT CLOSURE

14



As with any health or medicinal product on the market, the safety of the user is a top priority when it comes to packaging and dosing methods. When choosing the right closures for our pipette sets, you can choose between tamper-evident and child-resistant functions.

Heinlein child-resistant, tamper-evident closures are tested and certified in accordance with ISO 8317 and US 16 CFR section 1700.20. They are the pinnacle of innovative function, easy to handle and meet the reliability standards required by law.

THE 4 HEINLEIN PLUSES

15

- + Child-resistant or tamper-evident closure
- + ISO 8317 / US 16 CFR section 1700.20
- + Available with fine, rough or ridged closure contours
- + Glass or plastic pipettes

PIPETTE SETS

TECHNICAL DETAILS AND OPTIONS:

16

SUCTION BULB

Material

NBR
oil-resistant material

Colour

Black
(other colours on request)

CLOSURE

Outer cap material

Polypropylene (PP)

Inner cap material

Polypropylene (PP)
or high-density
polyethylene (PE-HD)

Certification

- ISO 8317
- US 16 CFR § 1700.20

PIPETTE

Materials

plastic, glass

Lengths

For all standard
bottle sizes

Graduation

Printed graduation
is possible

Variants

- Balloon tip
- Balloon tip, curved
- Capillary tip

BOTTLE

Opening

GL-18

Materials

Glass or PET

Bottle sizes

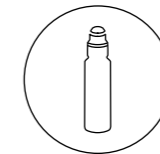
all standard bottles
5–100 ml
(others on request)



17

BALM FOR THE SKIN

ROLL-ON CLOSURE SYSTEMS



Roll-on closures dispense liquids, creams and oils conveniently and economically. The surface of the roller ball – either made of plastic or stainless steel – picks up a thin layer of liquid and applies it to the skin. Our roll-on closures come with standard PP (pharmaceutical grade) screw caps with DIN 168 threads.

THE 4 HEINLEIN PLUSES

- + Maximum pharmaceutical compatibility
- + High yield thanks to precise application
- + Roller ball made optionally of plastic or stainless steel
- + Custom designs and colour variations



HEINLEIN SAMPLE-BOX

THE ELEGANCE OF TECHNICAL PRECISION

The Sample-Box was designed to catch the eye of potential customers and invite them to get to know our product range. It presents our closures and dosing inserts for the lifestyle sector in a high-quality, attractive box.

Would you like to check out these products? Ask for your free Sample-Box now. We dispatch these samples within 48 hours and free of charge throughout Europe.

Information and inquiries at:

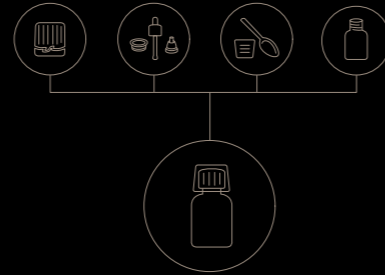
sales@heinlein-plastik.de

SYSTEMS SUPPLIER

WITH ONE-STOP-SHOP EXPERTISE

22 As a classic systems supplier with outstanding technical expertise, we mainly specialise in making closure and dosing systems. Within this spectrum, the continuous optimisation of our process chain plays a crucial role – from development expertise to in-house mould and machine construction through to production and assembly. We also take every opportunity to improve our performance in associated processes, such as sales, administration and after sales.

We have many years of experience and strong roots in an extensive partner network so can supply our customers with everything they need. We help them to select the right bottles for their purposes with regard to the different applications, sizes and formats.



OUTLOOK

THE RIGHT PARTNER FOR YOU

We have over nine decades of industry experience and a huge amount of collective technological expertise. This makes us ideally equipped to further expand our competitive position as specialists and systems suppliers in the development and production of primary packaging in the coming years.

The strength of our brand in the field of medical and pharmaceutical products hinges on the special skills of our employees: their qualifications, in-depth technical understanding and their consistently high levels of motivation and inspiration.

We meet the stringent quality standards stipulated by our industries by fulfilling all regulatory requirements. We also strive to bolster our growing economic strength with a comprehensive commitment to ecological protection and always finding the best total solution for our customers, partners and suppliers time and time again.

23



heinlein
PLASTIK-TECHNIK

www.heinlein-plastik.de



www.heinlein-virtualspace.com

FIND OUT
MORE
IN OUR NEW
SHOWROOM

HEINLEIN Plastik-Technik GmbH | Industriestrasse 7 | 91522 Ansbach, Germany | T: +49 981-9502-0 | E: info@heinlein-plastik.de